

CRN Local Appendix

North

CNLA 413 Westdale

Status	Date	Reviewed	Endorsed
V1.0	September 2021	A/Manager Network Rules T Weber	A/Network Operations Manager A Armstrong

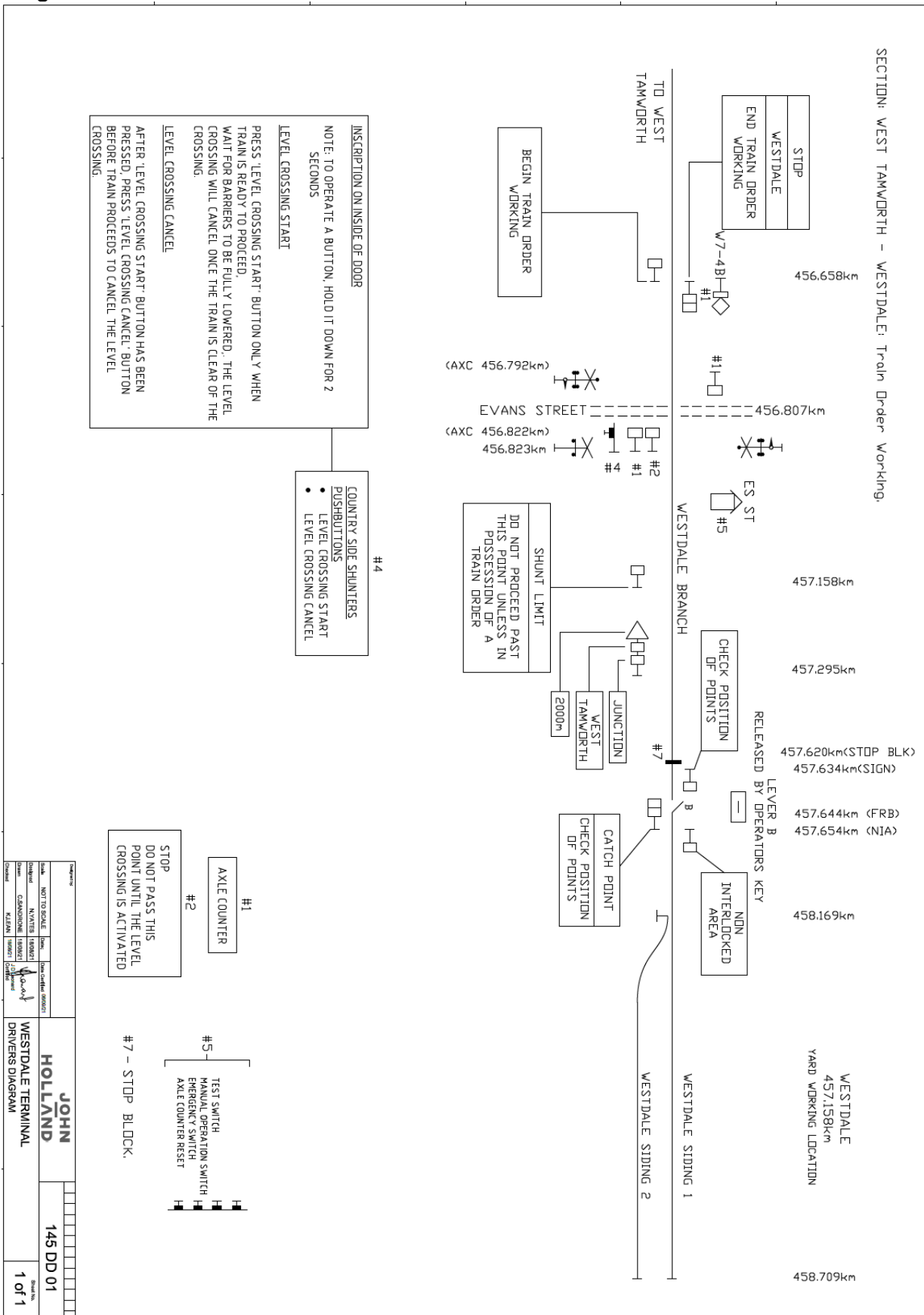
Network Control Board	Normal Call	Priority Call	Emergency Call	Backup number	Public Free call
North West	02 4028 9501	02 4028 9521	02 4028 9541	02 4028 9671	1800 643 373
South West	02 4028 9502	02 4028 9522	02 4028 9542	02 4028 9672	1800 021 914
West	02 4028 9504	02 4028 9524	02 4028 9544	02 4028 9674	1800 427 198

NOTE: For emergency use only, you can call 1800 JHR CRN from any phone.

Westdale

457.158km

Diagram of Westdale



Westdale

457.158km**General arrangements**

Westdale is a Non Train Order, Yard Working location.

The Branch line beyond 457.720km is a Private line.

Access to the private line is by negotiation with the line owner.

Begin and End Train Orders

Down - STOP/END TRAIN ORDER WORKING at 456.658km.

Up - BEGIN TRAIN ORDER WORKING at 456.658km.

Yard Limits

Down - STOP at 456.658km.

Shunting Limits

Up - SHUNT LIMIT at 457.158km.

Rail Traffic entering Westdale Yard

Down rail traffic must STOP at 456.658km and NOT PASS until authorised by the private siding owner of Westdale Yard

Rail Traffic exiting Westdale Yard

Up SHUNT LIMIT/DO NOT PROCEED PAST THIS POINT UNLESS IN POSSESSION OF TRAIN ORDER. Rail traffic must STOP at 457.158 km.

Rail Traffic crew must contact JHR Network Control and obtain a valid Train Order before proceeding.

Operation of Points

Frame B catch points – Down side of track. Single lever frame with 2-way locking, released by Operator's key, giving access to the private siding (Westdale Terminal).

Frame B is not to be used without consultation with the siding owner.

Evans Street level crossing

- Evans Street level crossing at 456.807 km is a Type F actively controlled level crossing with flashing lights, half booms and bells.
- The level crossing will automatically operate for Down direction rail traffic movements.
- This crossing is to be manually activated for Up direction rail traffic movements.
- Bell operation shall be silenced between the times of 2200hrs and 0600hrs daily.
- Manual Operation switch, Test switch, emergency keys and axle counter reset switch is provided
- Evans Street level crossing will be remotely monitored by the Cerberus Alarm Monitoring System.
- Signage 'DO NOT PUT ON OR OFF AT THIS LOCATION' to be affixed on the sides of the level crossing hut facing approaching rail traffic.

Westdale

457.158km

Down direction sequence of Operation for Evans Street

- Down rail traffic proceeding towards Evans Street will automatically activate the track circuit for the level crossing.
- After the rear most vehicle has cleared the level crossing, the equipment deactivates

Up direction sequence of Operation for Evans Street

- Rail traffic comes to a stand at the STOP sign prior to Evans Street.
- Rail traffic crew operates the Pushbutton to activate the level crossing equipment.
- Rail traffic may proceed over the level crossing once the level crossing equipment has operated correctly
- After the rear most vehicle has cleared the level crossing, the equipment deactivates.
- If the rail traffic crew has operated the level crossing but is unable to proceed over the level crossing, then the level crossing can be cancelled by the operation of the Cancel push button.

Pushbutton units

Pushbutton units are provided to activate or cancel level crossing equipment.

The pushbutton unit must be kept closed and secured by an SL lock when not in use.
To operate the crossing a competent worker must:

- Unlock the pushbutton unit
- Press "LEVEL CROSSING START" button to commence operation.
- Wait for level crossing to be fully activated before proceeding.
- After the rear most vehicle has cleared the crossing, the level crossing will cease to operate.

- Press "LEVEL CROSSING CANCEL" to cancel operation of the crossing.
- If the level crossing has commenced operation and the movement does not proceed, the level crossing protection equipment must be cancelled by pressing the CANCEL pushbutton.
- The warning indications will be cancelled automatically when the rear most vehicle has cleared the level crossing.

Axle Counters

If an axle counter incorrectly shows a section as occupied due to a miscount of axles, power failure or incorrect operation, a competent worker must reset the system.

To reset the axle counter;

- Turn switch to left and hold for minimum 1 second
- Turn switch to right and hold for minimum 1 second
- Return switch to centre (normal) position.

If the track indications are green the axle counter section is unoccupied.



WARNING

The axle counter must not be reset without Network Control Officer authorisation.

If the axle counter fails, a competent worker may operate the level crossing in accordance with Network Procedure CNPR 715 Protecting Type F level crossings.